



*Gillian Marie*  
**HGM**

## Company Origins

From performing on the Theatrical Stage, I was propelled to enter the Studios and Runways of Fashion Design, actualizing an unfulfilled dimension of my Artistic Identity. Encouraged, Blessed and Equipped with the wit and style of My Parents, and their names, the House of Gillian Marie Couturier emerged! Each of my Collections are inspired by a particular decade with contemporary elements, so that the Professional Woman readily envisions my Designs as integral and timeless components of their wardrobe and participants in their lifestyle. It is my hope that by embodying the grace, beauty sophistication, civility and joy of previous times, in my current collections, perhaps we will recall, practice and require that they return and remain the best part of here and now and the future.

## House of Gillian Marie “2022” Collection Inspiration

This collection was inspired by the 1930's. Although it was an economically harsh time with the Depression prevailing and devastating many, there remained a faint Roar of the Elegance, Grandeur, Mischief and Hedonistic Spirit of the 1920's, a souvenir of what was and motivation for what could be again... and more!

A handwritten signature in black ink, appearing to read "Gillian Marie". The signature is fluid and cursive, with a large, sweeping loop at the end.



## The Gillian Marie Woman

The Gillian Marie Woman is a professional woman, married or single (perhaps a Mother). She's always multi-tasking with various goals and projects; which she's most likely spearheading! She attends multiple Social Galas and Charity Events every month.

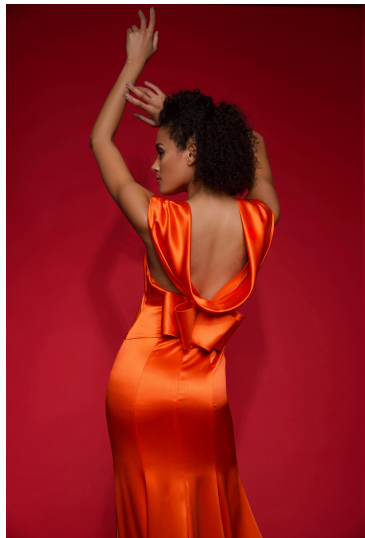
The "Gillian Marie" Woman is assertive, confident, definitive, nurturing , intuitive and reflective.  
She's always, always a Lady, universally positive, vulnerable, sophisticated, poised, sensual and graceful.

From Dawn to Dusk - From Sunrise to Sunset...  
She Is - The Gillian Marie Woman!



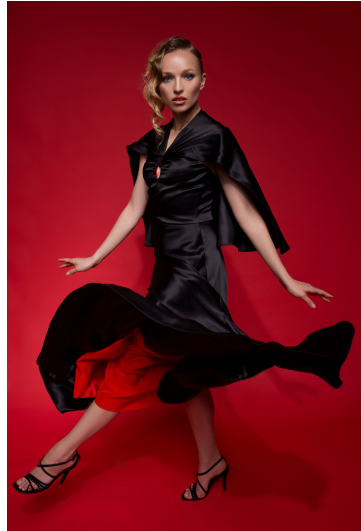
## “Cockatoo”

Orange Silk Satin Back Crepe with Scoop Neck and Elongated Back Drape.



## “Caped Goodness”

Black Double Face Silk Charmeuse  
Keyhole Bodice with Mid-Length Cape in Back --  
transmitting a Strong Enchanting Profile!





## “Golden Whispers”

Ivory Silk Satin Back Crepe with Golden Mesh Accents  
on the Neckline and Skirt Overlay.



“Grecian”

Magenta Silk Satin Back Crepe with Belt and Adorned Buckle with Front Slit.



## "Ruby Glitter"

Red 4 Ply Silk with Peter Pan Collar and Sequined Overlay. Ankle Length.





## “Elegant Storm”

Silk Velvet Relaxed Trench Coat with Detailed Back Yoke.



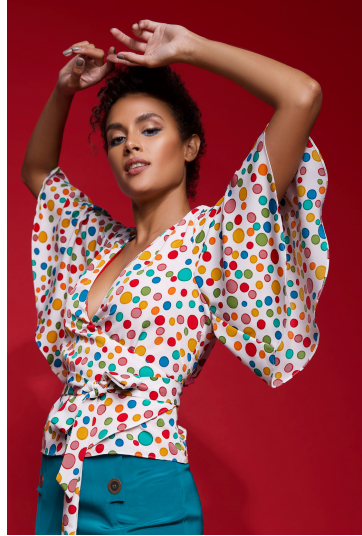
“Elegant Storm in Melon Color”

Silk Velvet Relaxed Trench Coat with Detailed Back Yoke.



## “Polka Dot Blouse and Skirt”

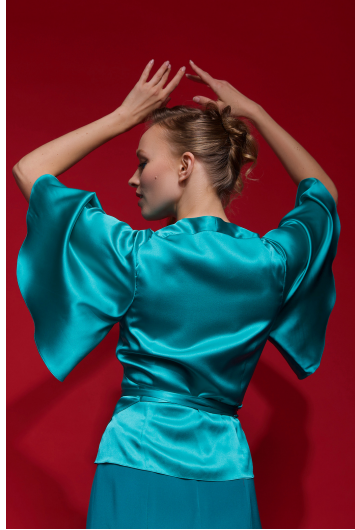
Fabric Blend Polka Dot Butterfly Blouse Lined with Red Silk Charmeuse and Teal 4 Ply Silk Flared Skirt with Symmetrical Button in Front.





## "Blue Butterfly Blouse"

Turquoise Silk Charmeuse Butterfly Blouse Lined with Red Silk Charmeuse.



## “Fontaine”

Orange Satin Back Crepe with Cutouts in the Bodice and Defined Shoulders.



## “Green Faux Fur”

Green Faux Fur with “Lips” Lining complemented with  
“Grecian” Design.





## “Gillian Marie Bridal “2022”

Ivory Silk Satin Back Crepe with Sweetheart Neckline, Pale Blue Beaded Overlay on the Skirt, Haltered Back Silhouette and Ribbon Tie!





*Gillian Marie*  
**HGM**